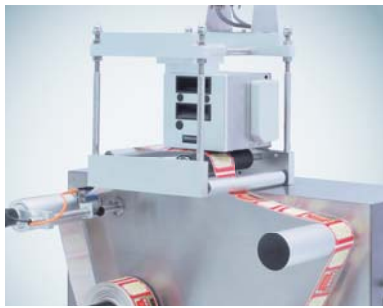
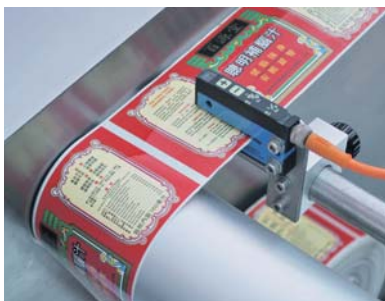


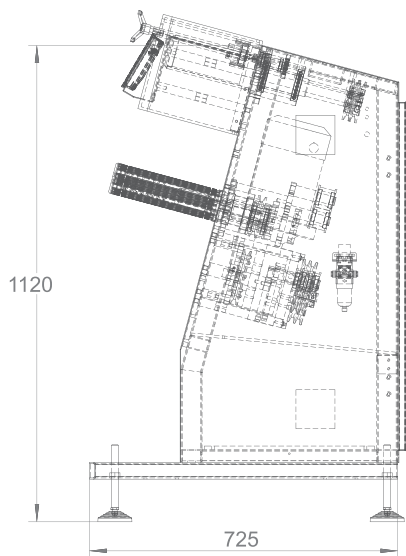
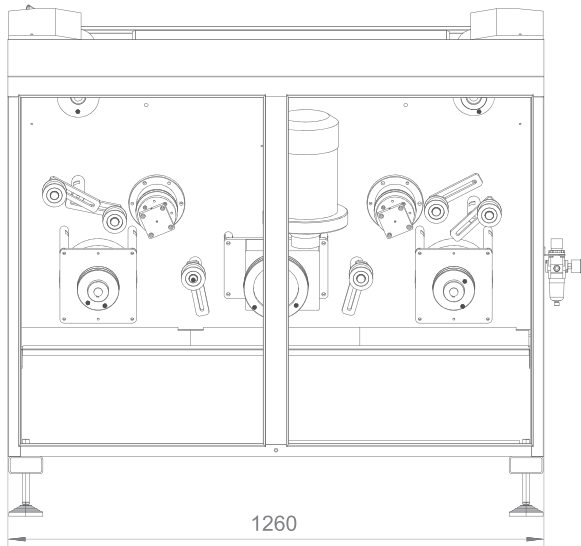
Colamark



Colamark RW420V Vertical Label Rewinding Machine

RW420V is designed for rewinding label rolls conveniently in a vertical manner and carrying out various value added functions at the same time. This includes counting, quality check, vision inspection, splicing, variable data imprinting etc.. It is widely used in the printing, food and beverage, pharmaceutical, and daily chemical industries.





Features

Photo sensor for simultaneously label counting during rewind. Ensures accurate control of label quantities in various transaction points in the production process.

Pre-set count quantity and automatic stop on reaching the pre-set quantity

Length counting function

Allow connecting small rolls of labels into a large roll for convenient storage and management

Optional auto-alignment mechanism to ensure flat sides for the label roll.

Vertical design to allow easy installation of various optional process accessories such as inkjet printer, thermal transfer overprinter, laser coder etc. for adding variable characters and numbers, graphics, dates and marks etc. to the label roll.

Optional inspection camera can also be installed for real time inspection of the added graphics, barcode and data etc.

Machine Model	RW420V
Max. label roll dia.	400mm
Max. label roll width	200mm
Label roll core dia.	76mm
Rewinding speed	100m/min.
Dimensions	(L)1260mm × (W)725mm × (H)1120mm
Electricity & power	220V 50Hz 300W

For continuous improvement on design and product innovations, all specification data are subject to change without prior notice

Colamark (Guangzhou) Labeling Equipment Limited

19 Jin Xiu Road, Economics Trade Development District, Guangzhou, China 510730

Tel: +86 20 8221 6718 Fax: +86 20 8221 5799

Colamark Asia Ltd

820 Topsail Plaza, 11 On Sum Street, Shatin, Hong Kong

Tel: +852 2634 8011 Fax: +852 8161 3311 info@colamark.com www.colamark.com

| HongKong | Guangzhou | Kunming Chengdu | Wuhan | Chongqing | Xian | Shanghai | Qingdao | Beijing | Shenyang | Harbin |