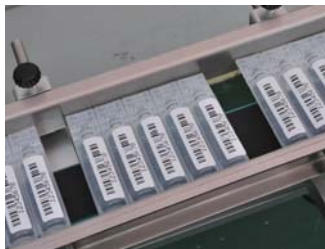
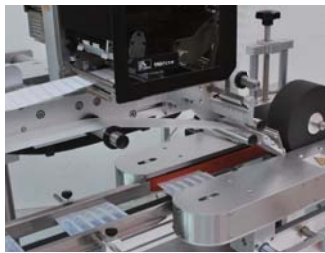
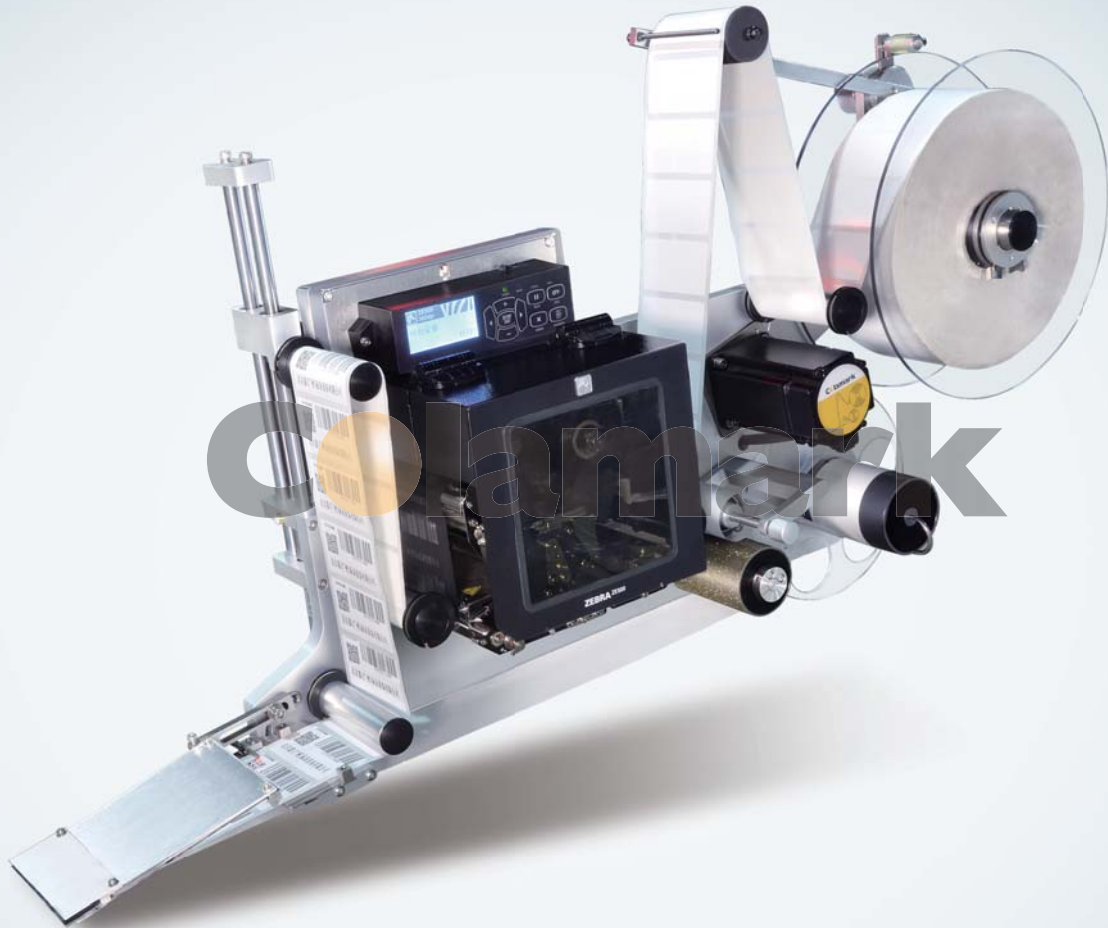


Colamark



PA6000 Print and Apply System

PA6300 enables real time printing and application of labels on to product packages. Information such as production data, serial & batch numbers, anti-counterfeit numbers, unique product ID, packaging data, and distribution channel data etc. can be printed to the label in characters, barcodes, or 2D codes, or even in the form of RFID. Automatic application of these information on-line enables effective track and trace of the products in the subsequent distribution channels.

Features

- Choice of different label adaptors: Tamp-on, blow-on, brush-on, corner-wrap etc. to cater for the different needs in different production environments.
- Alert function: Error messages and warning signal output when problem occurs.
- Different instructions are available on errors such as "open/close", "stop/continue" etc.
- Versatile Label Editing: Compatible with most label editing software in the market - allow maximum flexibility in formatting labels.
- Highly user friendly interactive touch-screen interface in both Chinese and English, makes operation easy and convenient.
- Simple installation: Specially designed mounting stand with wide adjustment range for simple installation and easy adjustment.

Machine Model	PA6300
Labeling speed	Max. 50~80 pcs./min (depends on object & label sizes and labeling pattern)
Labeling speed	±2.0mm (other than errors from goods or labels)
Labeling orientations	Top, Side, Corner
Air pressure	0.5~0.7Mpa、300L/min
Print resolution	Choices of 203dpi、300dpi
Printing speed	305mm/sec.(203dpi)、203mm/sec.(300dpi)
Label size(Printing)	Standard: W<104mm、L:13~104mm(203/300dpi) Enhanced: W<168mm、L:76~168mm
Label size(Labeling)	Standard: (W)104mm X (L)110mm Enhanced: (W)168mm X (L)170mm
Labels requirements	Glassin liner is required. Face stock thickness >5μ and stiffness complied with Colamark requirements. External diameter of label roll <350mm, internal diameter of label roll 76.5mm.
I/O ports	Standard RS485 or RS422 optional
Machine dimensions	(L)850mm × (W)850mm × (H)1,787mm
Power consumption	220VAC±10% 46-62Hz 0.45KW

For continuous improvement on design and product innovations, all specification data are subject to change without prior notice

Colamark (Guangzhou) Labeling Equipment Limited

19 Jin Xiu Road, GETDD, Guangzhou, China

Tel: +86 20 8221 6718 Fax: +86 20 8221 5799 PC:510730

Colamark Technologies Limited

820 Topsail Plaza,11 On Sum Street,Shatin, Hong Kong

Tel: +852 2634 8011 Fax: +852 8161 3311 Email: info@colamark.com Web: www.colamark.com

|HongKong | Guangzhou | Kunming Chengdu | Wuhan | Chongqing | Xian | Shanghai | Qingdao | Beijing | Shenyang | Harbin |